

Supplementary data

Co-suppression of NbClpC1 and NbClpC2 in *Nicotiana benthamiana* lowers photosynthetic capacity via altered leaf structure

Md. Sarafat Ali, Youngjae Yu, Wook Oh, Ji Yoon Cho, Jinhee Choi, Radhika Dhakal, Youn-Il Park, Kwang-Hyun Baek*

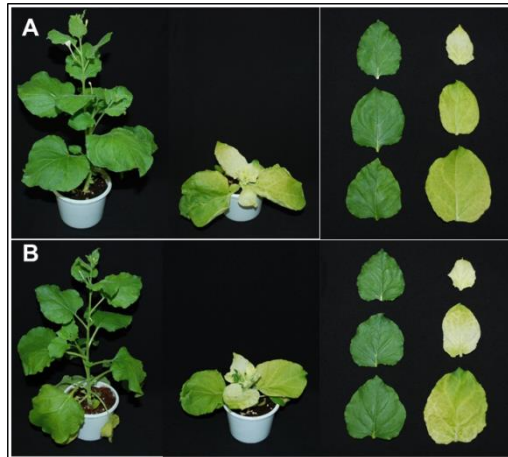


Fig 1. Phenotypes of the *GFP*-silenced and *NbClpC1/C2* co-suppressed *N. benthamiana*. The 4th, 5th and 6th leaves of *GFP*-silenced and *NbClpC1/C2* co-suppressed *N. benthamiana* were compared from bottom to top. **A** and **B**, represent two different replicates.