

Supplementary data

Transcriptome analysis of differential expression genes from petals and lips of *Phalaenopsis amabilis* (*Phalaenopsis aphrodite* Rchb. F) to identify genes associated with floral development

Yan-Xiao Li , Xiao-Ming Song , Zhen Wang , Shan-Wu Lv , Chang-Wei Zhang*

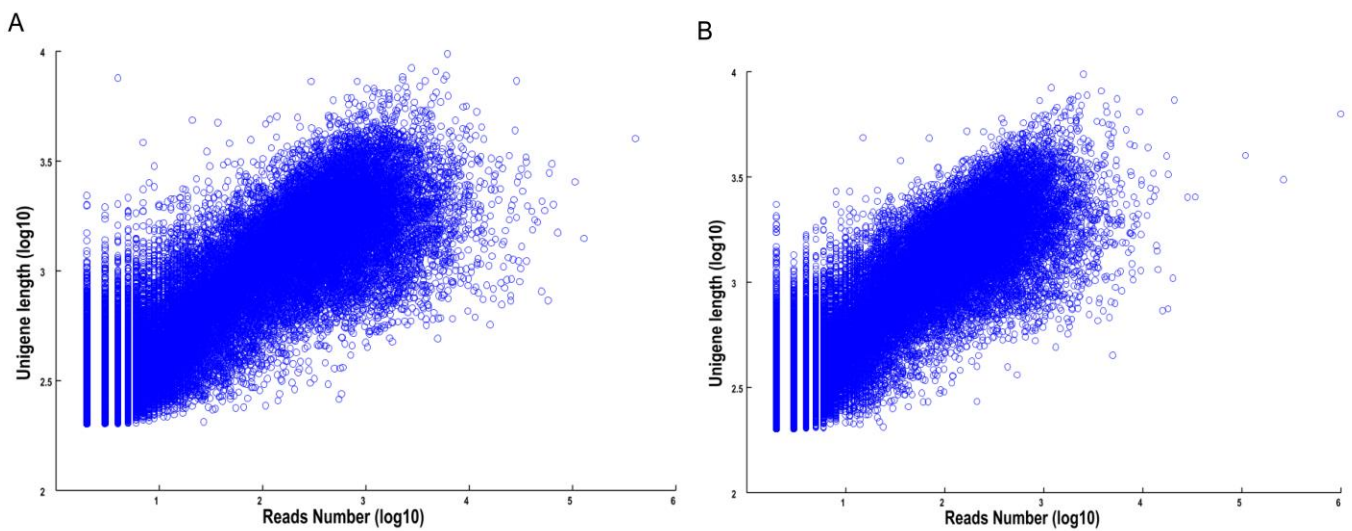
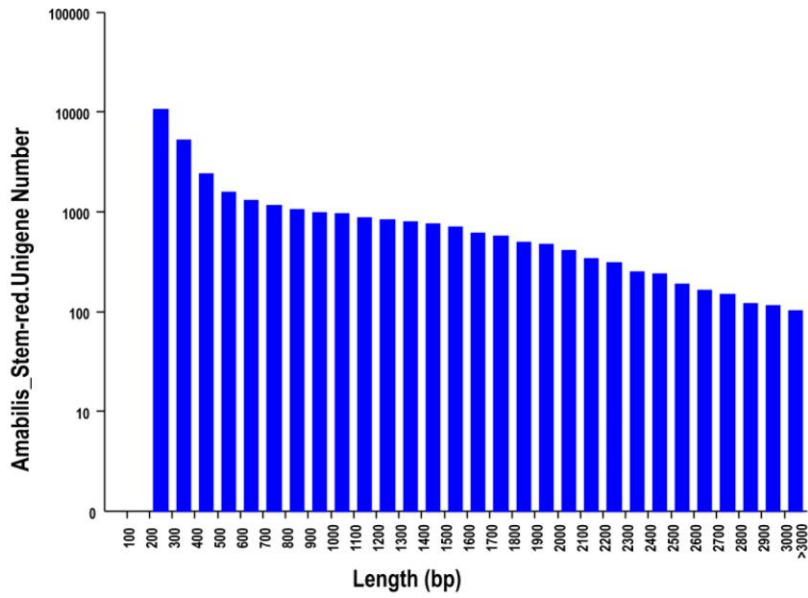


Figure S1. The distributions of unigenes length and read numbers. A is the unigenes length distributions of the Amabilis_Stem-red; B is the unigenes length distributions of the Amabilis_red.

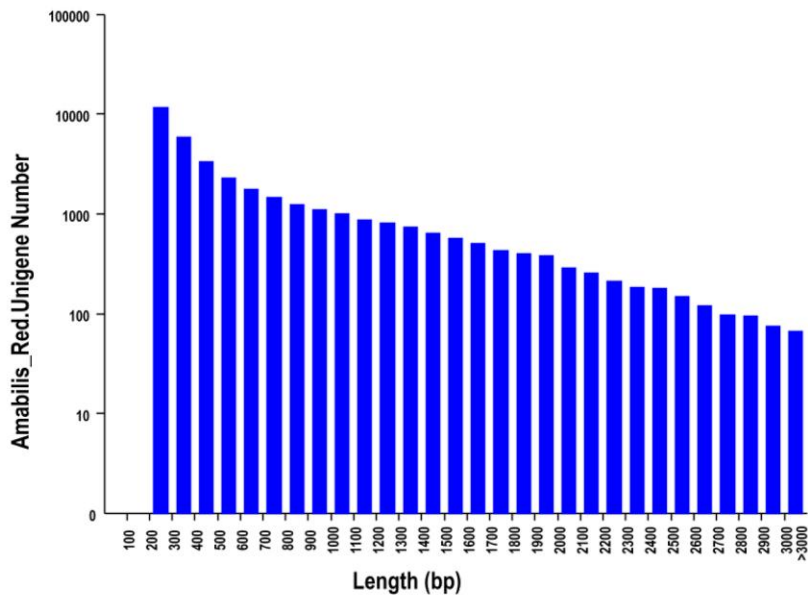
A

Amabilis_Stem-red.Unigene Length Distribution



B

Amabilis_Red.Unigene Length Distribution



C

Amabilis.Unigene Length Distribution

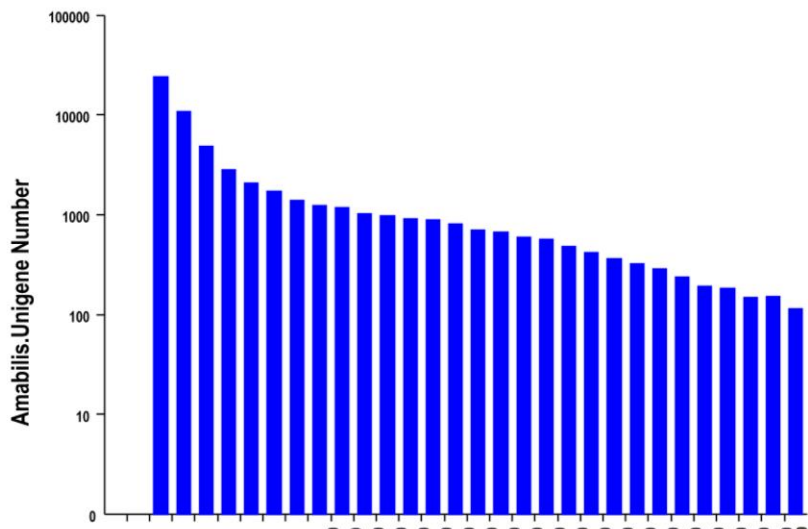


Figure S2. The unigenes length distributions. A is the unigenes length distributions of the Amabilis_Stem-red; B is the unigenes length distributions of the Amabilis_red; C is all the unigenes length distributions.

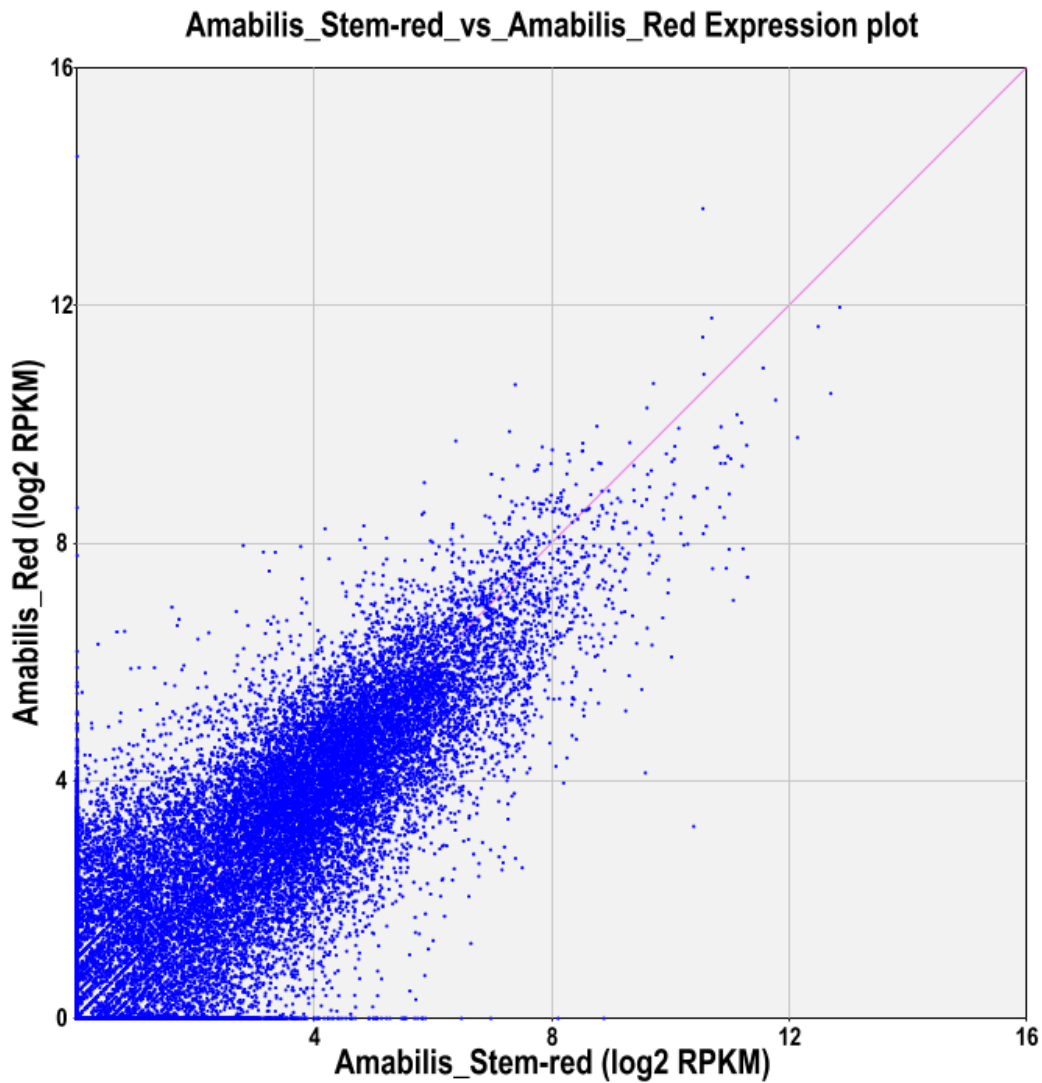


Figure S3. Amabilis_Stem_red vs Amabilis_red expression plot. The Y-axis represents Amabilis_red (lip) expression, and the X-axis means the Amabilis_Stem-red (tepal).