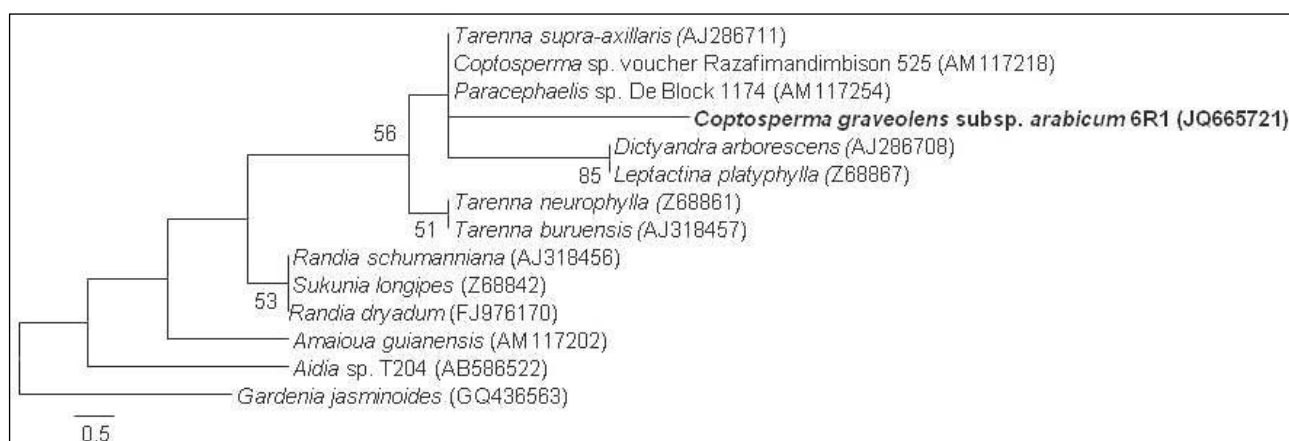
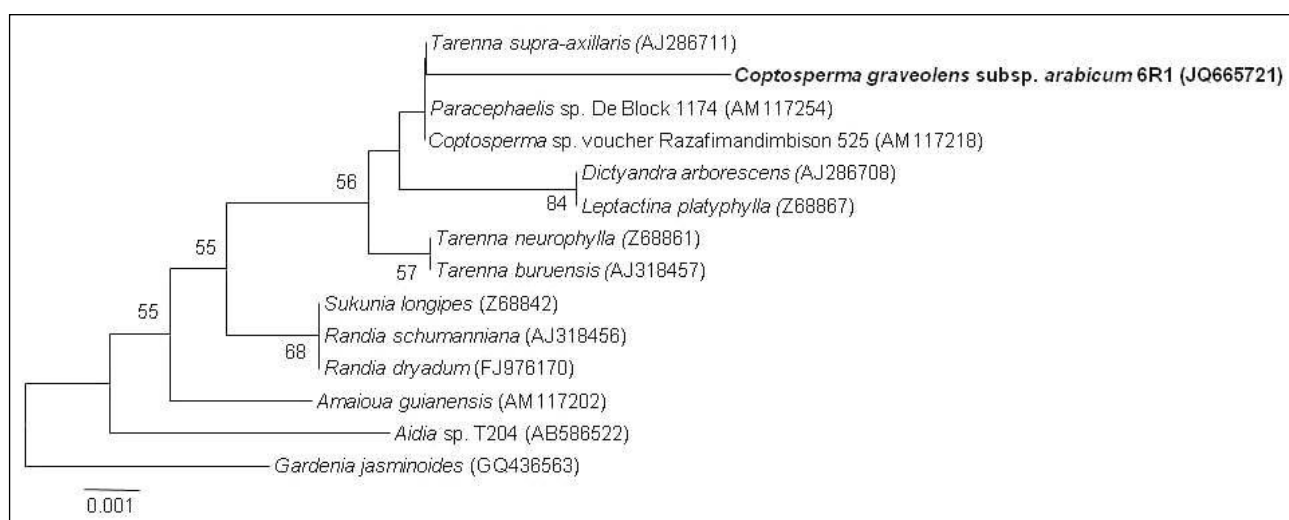


Supplementary Data**Ribulose-1, 5-biphosphate carboxylase (rbcL) gene sequence and random amplification of polymorphic DNA (RAPD) profile of regionally endangered tree species *Coptosperma graveolens* subsp. *arabicum* (S. Moore) Degreef**

Sameera O. Bafeel¹, Abdullah Alaklabi², Ibrahim A. Arif^{3,4}, Haseeb A. Khan^{3,4}, Ahmad H. Alfarhan³, Anis Ahamed^{3,4}, Jacob Thomas³ and Mohammad A. Bakir^{3,4*}



Supplementary Fig 1. Maximum Parsimony analysis of *C. graveolens* subsp. *arabicum* and related taxa. GenBank accession numbers of the corresponding taxa are written in parentheses. The percentage of replicate trees in which the associated taxa clustered together in the bootstrap test (1000 replicates) are shown (>50%) next to the branches. The scale bar represents the branch length measurement in the number of substitutions per site.



Supplementary Fig 2. Neighbor-Joining tree of *C. graveolens* subsp. *arabicum* and related taxa. GenBank accession numbers of the corresponding taxa are written in parentheses. The percentage

of replicate trees in which the associated taxa clustered together in the bootstrap test (1000 replicates) are shown (>50%) next to the branches. The scale bar represents the branch length measurement in the number of substitutions per site.