

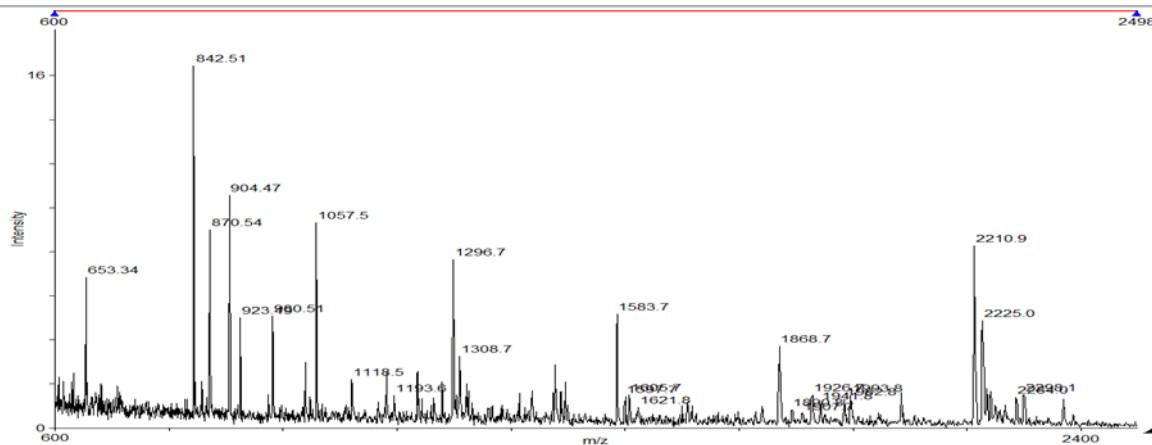
Supplementary Data

Comparative secretome analysis of differentially-induced proteins in rice lesion mimic spotted leaf 11 (*sp11*)

Yiming Wang, Jingni Wu, Dong Yeol Lee, Yu Ji Kim, Yong Chul Kim, In Soo Choi, Beom-Gi Kim Sang-Ryeol Park, Sang Gon Kim, Kyu Young Kang, Sun Tae Kim

Supplemental data – MALDI-TOF MS spectra matching to a protein

Spot 02



MOWSE Score	#/26(%) Masses Matched	% Cov	% TIC	Mean Data Err ppm	ToI ppm	MS-Digest	Index	# Protein	MW (Da)	pI	Accession #	Species	Protein Name
1	4079	4 (15)	23.7	15.4	-29.9	81.9			17992	5.1	M	ORYZA SATIVA (JAPONICA CULTIVAR-GROUP)	thaumatin-like protein
2	802	4 (15)	34.8	15.4	1.05	107			14703	11.4	M	ORYZA SATIVA (JAPONICA CULTIVAR-GROUP)	hypothetical protein
3	727	4 (15)	16.1	15.4	-19.1	108			32541	111.6	M	ORYZA SATIVA (JAPONICA CULTIVAR-GROUP)	Epstein-Barr virus EBNA-1-like protein
4	664	4 (15)	10.5	15.4	-42.9	62.1			64880	5.5	M	ORYZA SATIVA (JAPONICA CULTIVAR-GROUP)	OSJNBb0048P24.17
5	569	4 (15)	12.2	15.4	-55.7	81.4			43213	5.3	M	ORYZA SATIVA (JAPONICA CULTIVAR-GROUP)	putative chalcone synthase

1863637X.....X.....X.....X.....
2635188X.....X.....X.....X.....
2442418X.....X.....X.....X.....
2761873X.....X.....X.....X.....
2232903X.....X.....X.....X.....

[Detailed Report](#)

1863637
2635188
2442418
2761873

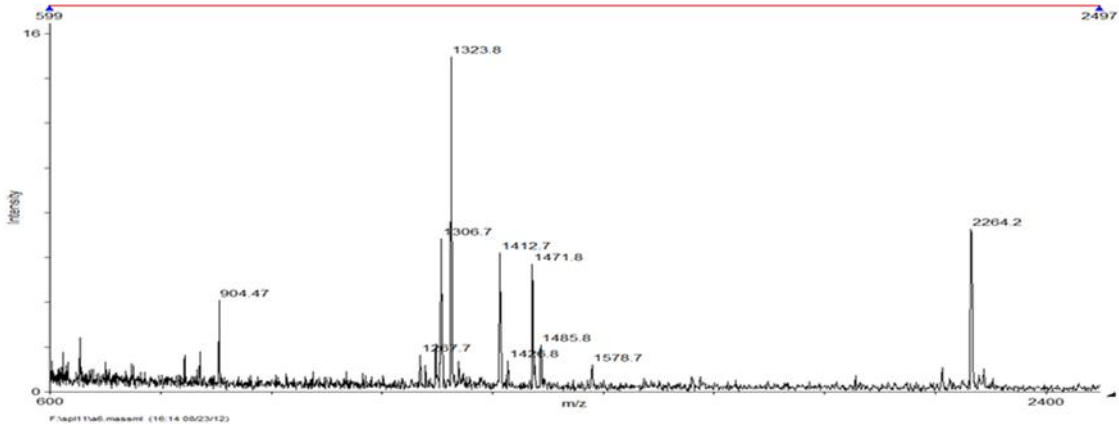
Detailed Results

1. 4/26 matches (15%).
Acc. #: Species: ORYZA SATIVA (JAPONICA CULTIVAR-GROUP) **Name:** thaumatin-like protein
Acc. #: Species: ORYZA SATIVA (JAPONICA CULTIVAR-GROUP) **Name:** thaumatin-like protein precursor
Acc. #: Species: ORYZA **Name:** Thaumatin-like protein precursor
Index: MW: 17992 Da pI: 5.1

m/z Submitted	MH ⁺ Matched	Delta ppm	Modifications	Start	End	Missed Cleavages	Sequence
1057.4610	1057.4367	23		75	84	0	(R) (G)
1583.6730	1583.7046	-20		149	161	0	(R) (T)
1868.6740	1868.8054	-70		162	177	0	(K) (-)
1941.7630	1941.8647	-52		146	161	1	(R) (T)

Click link below to search for cysteine linked fragments.
 Click link below to do a non-specific cleavage search.
 Click link below to search for another component.
 The matched peptides cover 23.7% (42/177AA's) of the protein.
 Coverage Map for This Hit (MS-Digest index #):

Spot 06

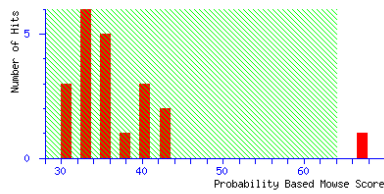


Mascot Search Results

User : kang
 Email : rkddudgus@hanmail.net
 Search title :
 Database : NCBI nr 20071228 (5815357 sequences: 2006184466 residues)
 Taxonomy : Oryza sativa (rice) (133865 sequences)
 Timestamp : 3 Jan 2008 at 09:04:56 GMT
 Top Score : 67 for [gi|42408425](#), putative superoxide dismutase [Cu-Zn], chloroplast precursor [Oryza sativa (japonica cultivar-group)]

Probability Based Mowse Score

Protein score is $-10 \cdot \log(P)$, where P is the probability that the observed match is a random event. Protein scores greater than 64 are significant ($p < 0.05$).



Concise Protein Summary Report

Format As: Concise Protein Summary [Help](#)
 Significance threshold $p < 0.05$ Max. number of hits AUTO

- [gi|42408425](#) Mass: 20519 Score: 67 Expect: 0.026 Queries matched: 4
 putative superoxide dismutase [Cu-Zn], chloroplast precursor [Oryza sativa (japonica cultivar-group)]

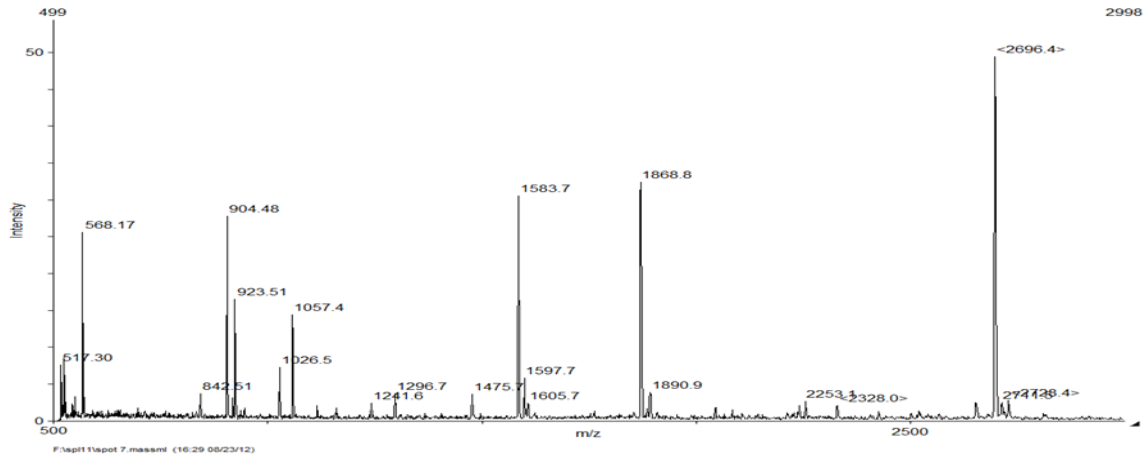
[gi|125604340](#) Mass: 20508 Score: 67 Expect: 0.026 Queries matched: 4
 hypothetical protein OsJ_027148 [Oryza sativa (japonica cultivar-group)]

[gi|115477837](#) Mass: 21288 Score: 66 Expect: 0.031 Queries matched: 4
 Os08g0561700 [Oryza sativa (japonica cultivar-group)]

[gi|155296283](#) Mass: 15559 Score: 32 Expect: 84 Queries matched: 2
 hypothetical protein [Oryza sativa (japonica cultivar-group)]
- [gi|28269443](#) Mass: 19244 Score: 44 Expect: 5.5 Queries matched: 3
 putative acetyltransferase [Oryza sativa (japonica cultivar-group)]

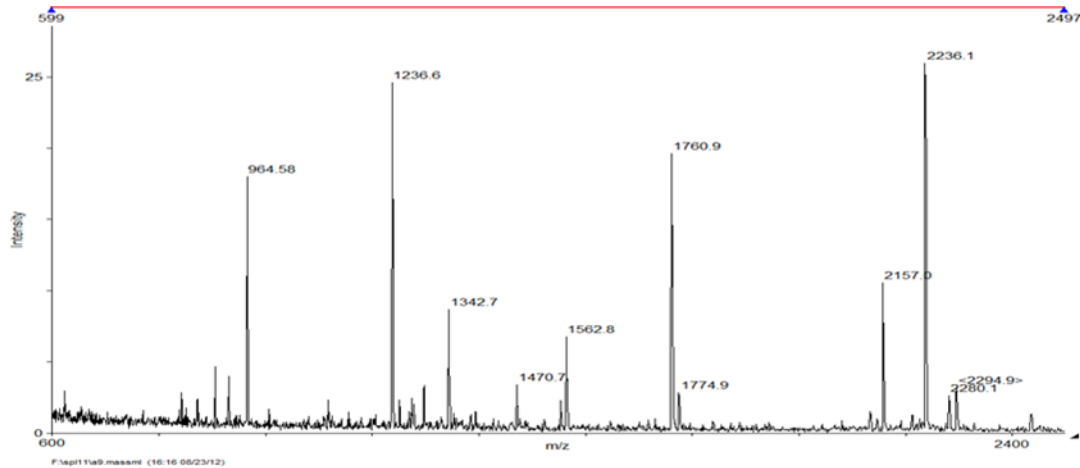
[gi|125553472](#) Mass: 37198 Score: 34 Expect: 60 Queries matched: 3
 hypothetical protein OsI_020414 [Oryza sativa (indica cultivar-group)]

Spot 07



C	D	E	F	G	H	I	J	K	L	M	N	O
	MOWSE Score	#/20(%) Masses Matched	% Cov	% TIC	Mean Err ppm	Data Tol ppm	MS-Digest Index #	Protein MW (Da)/pI	Accession #	Species	Protein Name	
	2192	4 (20)	24.3	20	9.21	10.9	1863637	17992/5.1	20376 M	ORYZA SATIVA (JAPONICA CULTIVAR-GROUP)	thaumatin-like protein	
<p>1. 4/20 matches (20%). Acc. #: 20376 Species: ORYZA SATIVA (JAPONICA CULTIVAR-GROUP) Name: thaumatin-like protein Acc. #: 77556724 Species: ORYZA SATIVA (JAPONICA CULTIVAR-GROUP) Name: thaumatin-like protein precursor Acc. #: 401190 Species: ORYZA Name: Thaumatin-like protein precursor Index: 1863637 MW: 17992 Da pI: 5.1</p>												
	m/z	MH ⁺	Delta ppm	Modifications	Start	End	Missed Cleavages	Sequence				
	517.297	517.2881	17		71	74	0	(R) VWGR (I)				
	1057.445	1057.437	7.8		75	84	0	(R) TGCSFDG (R) SGR (G)				
	1583.712	1583.705	4.7		149	161	0	(R) CPDAYLF (I) PEDNTK				
	1868.819	1868.805	7.3		162	177	0	(K) THACSGN (I) SNYQWF (I) CP (-)				
<p>Click link below to search for cysteine linked fragments. 16 unmatched masses:</p> <p>Click link below to do a non-specific cleavage search. 16 unmatched masses:</p> <p>Click link below to search for another component. 16 unmatched masses:</p> <p>The matched peptides cover 24.3% (43/177AA's) of the protein. Coverage Map for This Hit (MS-Digest index #): 1863637</p>												

Spot 09

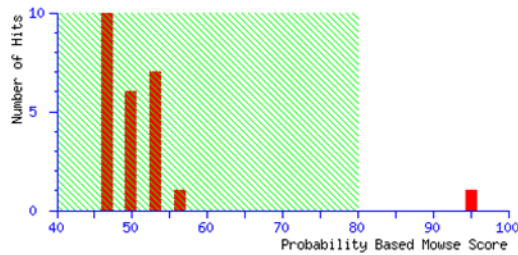


MASCOT Mascot Search Results

User : kang
 Email : rkddudgns@hanmail.net
 Search title :
 Database : NCBI nr 20071228 (5815357 sequences; 2006184466 residues)
 Timestamp : 3 Jan 2008 at 09:14:01 GMT
 Top Score : 95 for [gi|115436780](#), Os01g0501800 [Oryza sativa (japonica cultivar-group)]

Probability Based Mowse Score

Protein score is $-10 \cdot \log(P)$, where P is the probability that the observed match is a random event. Protein scores greater than 80 are significant ($p < 0.05$).

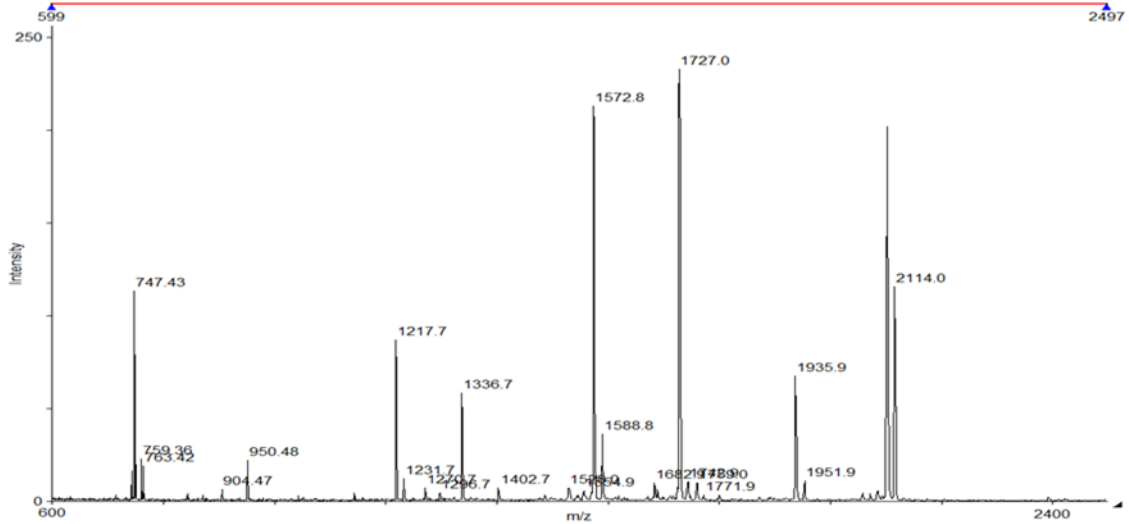


Concise Protein Summary Report

Format As: Concise Protein Summary [Help](#)
 Significance threshold $p < 0.05$ Max. number of hits: AUTO
 Re-Search All Search Unmatched

- [gi|115436780](#) Mass: 34840 Score: **95** Expect: 0.0018 Queries matched: 6
 Os01g0501800 [Oryza sativa (japonica cultivar-group)]
[gi|125526093](#) Mass: 38492 Score: **93** Expect: 0.003 Queries matched: 6
 hypothetical protein OsI_002054 [Oryza sativa (indica cultivar-group)]
[gi|149392661](#) Mass: 18990 Score: **90** Expect: 0.0054 Queries matched: 5
 oxygen-evolving enhancer protein 1 [Oryza sativa (indica cultivar-group)]
[gi|149392519](#) Mass: 21775 Score: **86** Expect: 0.014 Queries matched: 5
 oxygen-evolving enhancer protein 1 [Oryza sativa (indica cultivar-group)]

Spot 11

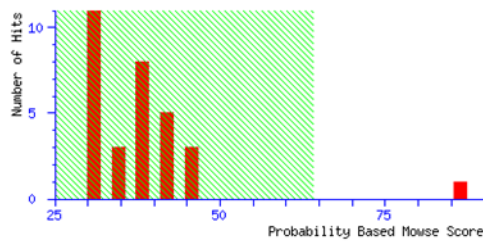


Mascot Search Results

User : young hyun kang
 Email : rkddudgus@hanmail.net
 Search title :
 Database : NCBI nr 20071116 (5633163 sequences; 1947344958 residues)
 Taxonomy : Oryza sativa (rice) (133852 sequences)
 Timestamp : 22 Nov 2007 at 13:42:16 GMT
 Top Score : 86 for [gi|20286](#), peroxidase [Oryza sativa (japonica cultivar-group)]

Probability Based Mowse Score

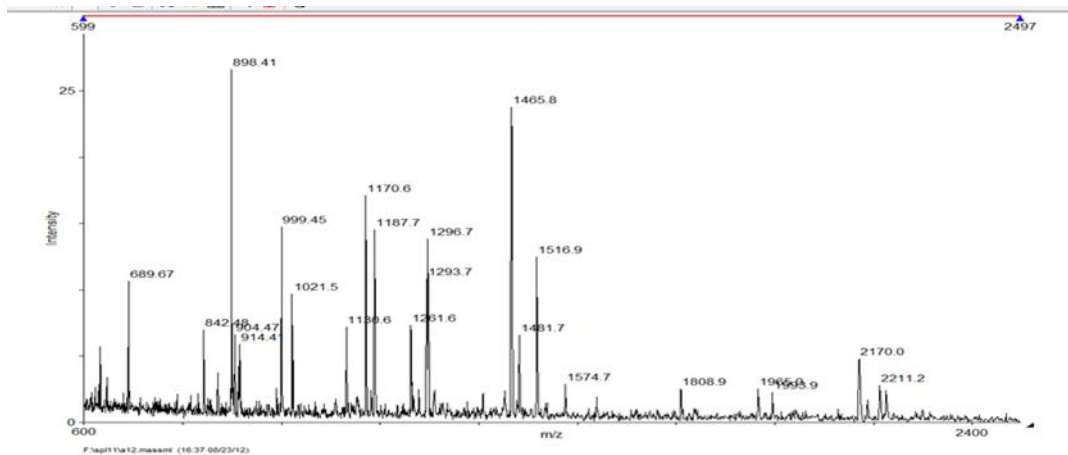
Protein score is $-10 \cdot \log(P)$, where P is the probability that the observed match is a random event. Protein scores greater than 64 are significant ($p < 0.05$).



Concise Protein Summary Report

Concise Protein Summary
 Significance threshold $p < 0.05$ Max. number of hits AUTO

- [gi|20286](#) Mass: 32855 Score: 86 Expect: 0.00031 Queries matched: 7
 peroxidase [Oryza sativa (japonica cultivar-group)]
[gi|115474059](#) Mass: 32869 Score: 86 Expect: 0.00031 Queries matched: 7
 Os07g0677200 [Oryza sativa (japonica cultivar-group)]
[gi|2429286](#) Mass: 32843 Score: 86 Expect: 0.00031 Queries matched: 7
 peroxidase [Oryza sativa]
[gi|55701089](#) Mass: 33556 Score: 86 Expect: 0.00035 Queries matched: 7
 TPA: class III peroxidase 111 precursor [Oryza sativa (japonica cultivar-group)]
[gi|125559597](#) Mass: 33588 Score: 86 Expect: 0.00036 Queries matched: 7
 hypothetical protein OsI_026365 [Oryza sativa (indica cultivar-group)]
[gi|125601503](#) Mass: 37321 Score: 83 Expect: 0.00069 Queries matched: 7
 hypothetical protein OsJ_024562 [Oryza sativa (japonica cultivar-group)]

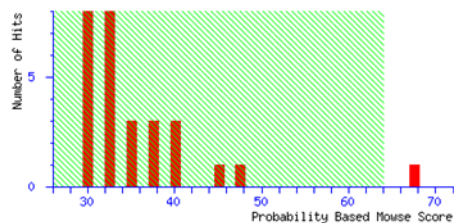


Mascot Search Results

User : young hyun kang
 Email : rkddudgus@hanmail.net
 Search title :
 Database : NCBIInr 20071116 (5633163 sequences; 1947344958 residues)
 Taxonomy : Oryza sativa (rice) (133852 sequences)
 Timestamp : 23 Nov 2007 at 03:54:05 GMT
 Top Score : 68 for [gi|57283874](#), ribulose biphosphate carboxylase large chain [Oryza sativa]

Probability Based Mowse Score

Protein score is $-10 \cdot \log(P)$, where P is the probability that the observed match is a random event. Protein scores greater than 64 are significant ($p < 0.05$).

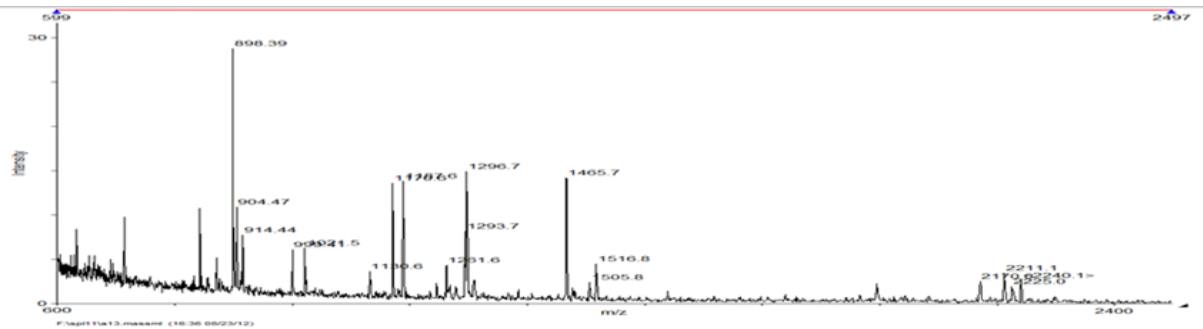


Concise Protein Summary Report

Format As: Concise Protein Summary [Help](#)
 Significance threshold $p < 0.05$ Max. number of hits AUTO
 Re-Search All Search Unmatched

- [gi|57283874](#) Mass: 52760 Score: 68 Expect: 0.023 Queries matched: 6
 ribulose biphosphate carboxylase large chain [Oryza sativa]
[gi|19920172](#) Mass: 52863 Score: 68 Expect: 0.024 Queries matched: 6
 Putative rbcL; RuBisCO large subunit from chromosome 10 chloroplast insertion [Oryza sativa (japonica cultivar-group)]
[gi|11466795](#) Mass: 52847 Score: 68 Expect: 0.024 Queries matched: 6
 ribulose-1,5-biphosphate carboxylase/oxygenase large subunit [Oryza sativa (japonica cultivar-group)]
[gi|109156602](#) Mass: 53667 Score: 64 Expect: 0.051 Queries matched: 6
 ribulose-1,5-biphosphate carboxylase/oxygenase large subunit [Oryza sativa (indica cultivar-group)]
[gi|115468792](#) Mass: 47956 Score: 55 Expect: 0.43 Queries matched: 5
 Oe06g0598500 [Oryza sativa (japonica cultivar-group)]
[gi|110288945](#) Mass: 40249 Score: 54 Expect: 0.47 Queries matched: 5
 Ribulose biphosphate carboxylase large chain precursor, putative, expressed [Oryza sativa (japonica cultivar-group)]
[gi|11955](#) Mass: 52850 Score: 53 Expect: 0.74 Queries matched: 5

Spot 13

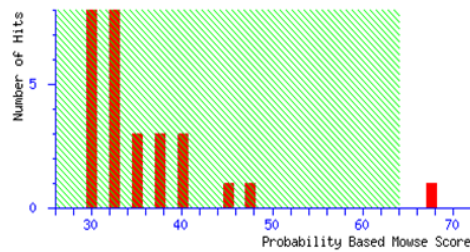


{MATRIX} Mascot Search Results
{SCIENCE}

User : young hyun kang
 Email : rkddudgus@hanmail.net
 Search title :
 Database : NCBI nr 20071116 (5633163 sequences; 1947344958 residues)
 Taxonomy : Oryza sativa (rice) (133852 sequences)
 Timestamp : 23 Nov 2007 at 04:29:51 GMT
 Top Score : 68 for [gi|57283874](#), ribulose biphosphate carboxylase large chain [Oryza sativa]

Probability Based Mowse Score

Protein score is $-10 \cdot \log(P)$, where P is the probability that the observed match is a random event.
 Protein scores greater than 64 are significant ($p < 0.05$).

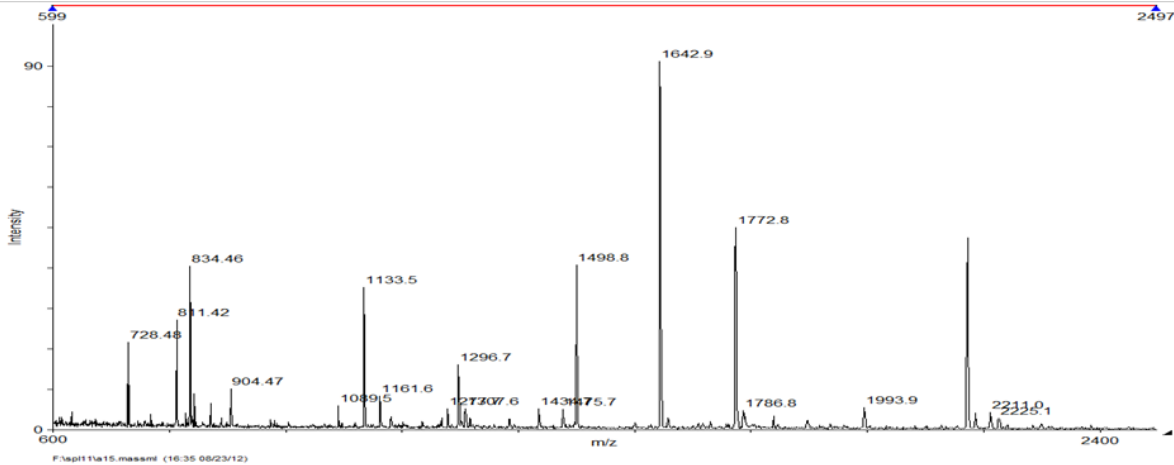


Concise Protein Summary Report

Format As: Concise Protein Summary [Help](#)
 Significance threshold $p < 0.05$ Max. number of hits AUTO
 Re-Search All Search Unmatched

- [gi|57283874](#) Mass: 52760 Score: 68 Expect: 0.023 Queries matched: 6
 ribulose biphosphate carboxylase large chain [Oryza sativa]
[gi|19920172](#) Mass: 52863 Score: 68 Expect: 0.024 Queries matched: 6
 Putative rbcL; RuBisCO large subunit from chromosome 10 chloroplast insertion [Oryza sativa (japonica cultivar-group)]
[gi|114466795](#) Mass: 52847 Score: 68 Expect: 0.024 Queries matched: 6
 ribulose-1,5-biphosphate carboxylase/oxygenase large subunit [Oryza sativa (japonica cultivar-group)]
[gi|109156602](#) Mass: 53667 Score: 64 Expect: 0.051 Queries matched: 6
 ribulose-1,5-biphosphate carboxylase/oxygenase large subunit [Oryza sativa (indica cultivar-group)]
[gi|115468792](#) Mass: 47956 Score: 55 Expect: 0.43 Queries matched: 5

Spot 15

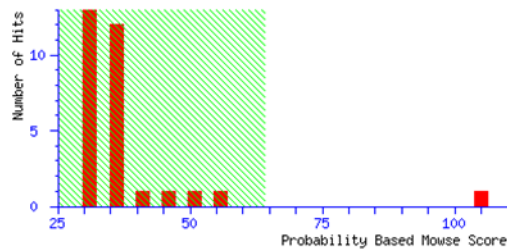


Mascot Search Results

User : young hyun kang
Email : rkddudgus@hanmail.net
Search title :
Database : NCBIInr 20071116 (5633163 sequences; 1947344958 residues)
Taxonomy : Oryza sativa (rice) (133852 sequences)
Timestamp : 23 Nov 2007 at 04:36:07 GMT
Top Score : 105 for [gi|115474601](#), Os08g0126300 [Oryza sativa (japonica cultivar-group)]

Probability Based Mowse Score

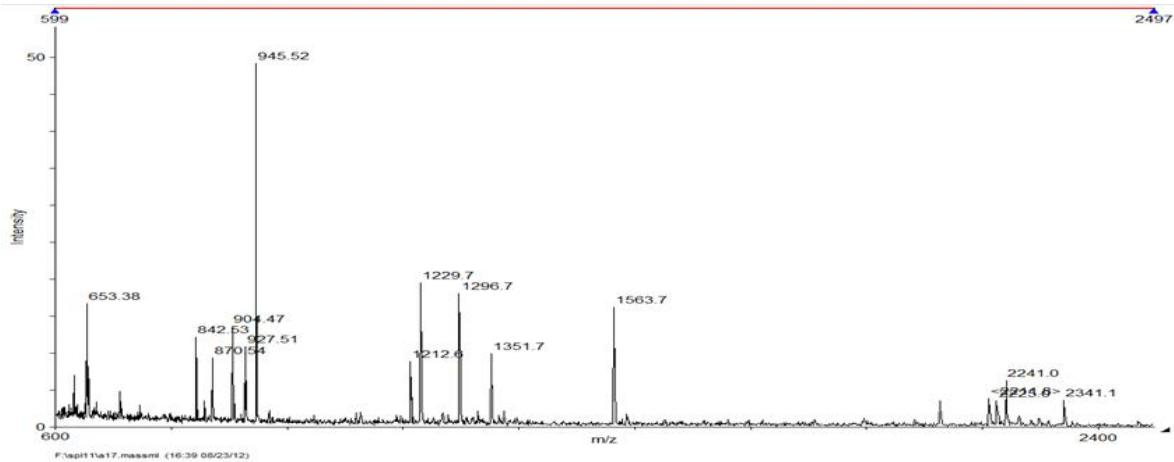
Protein score is $-10 \cdot \log(P)$, where P is the probability that the observed match is a random event. Protein scores greater than 64 are significant ($p < 0.05$).



Concise Protein Summary Report

Concise Protein Summary
 Significance threshold $p < 0.05$ Max. number of hits AUTO

- [gi|115474601](#) Mass: 36390 Score: **105** Expect: 4.2e-06 Queries matched: 8
 Os08g0126300 [Oryza sativa (japonica cultivar-group)]
[gi|1968996](#) Mass: 36470 Score: **105** Expect: 4.2e-06 Queries matched: 8
 glyceraldehyde-3-phosphate dehydrogenase
[gi|149392290](#) Mass: 22581 Score: **82** Expect: 0.00075 Queries matched: 6
 glyceraldehyde-3-phosphate dehydrogenase, cytosolic [Oryza sativa (indica cultivar-group)]
[gi|115459078](#) Mass: 36750 Score: 42 Expect: 8.6 Queries matched: 4
 Os04g0126300 [Oryza sativa (japonica cultivar-group)]

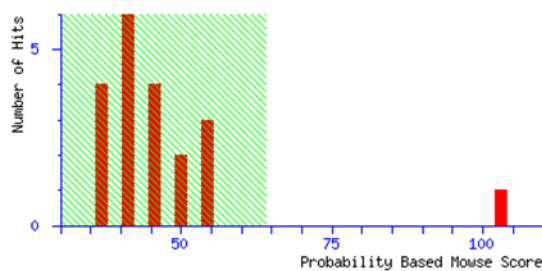


MASCOT Mascot Search Results

User : young hyun kang
 Email : rkddudgus@hanmail.net
 Search title :
 Database : NCBI nr 20071116 (5633163 sequences; 1947344958 residues)
 Taxonomy : Oryza sativa (rice) (133852 sequences)
 Timestamp : 23 Nov 2007 at 04:40:30 GMT
 Top Score : 103 for [gi|115470529](#), Os07g0141400 [Oryza sativa (japonica cultivar-group)]

Probability Based Mowse Score

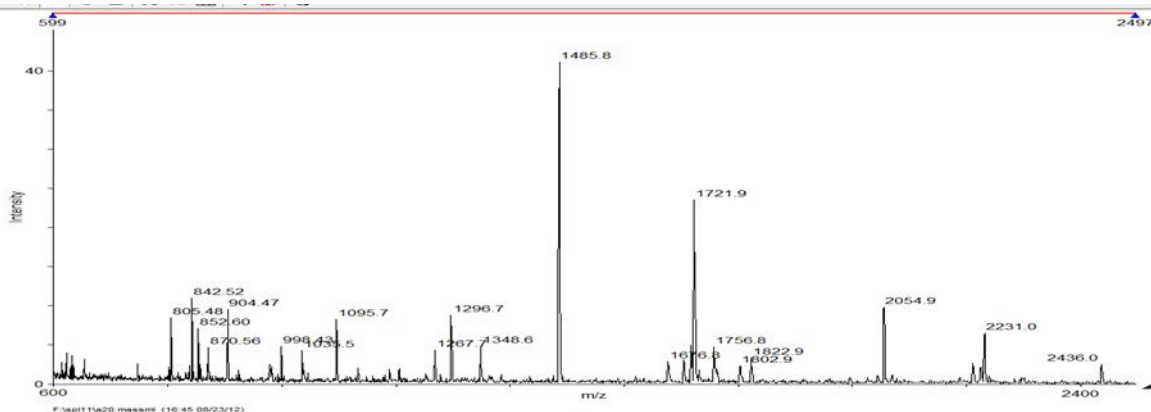
Protein score is $-10 \cdot \log(P)$, where P is the probability that the observed match is a random event. Protein scores greater than 64 are significant ($p < 0.05$).



Concise Protein Summary Report

Significance threshold $p < 0.05$

- [gi|115470529](#) Mass: 26923 Score: **103** Expect: 6.7e-06 Queries matched: 7
 Os07g0141400 [Oryza sativa (japonica cultivar-group)]
[gi|1398999](#) Mass: 27010 Score: **82** Expect: 0.00095 Queries matched: 6
 23 kDa polypeptide of photosystem II [Oryza sativa (japonica cultivar-group)]
[gi|125557198](#) Mass: 20779 Score: **74** Expect: 0.0055 Queries matched: 5
 hypothetical protein OsI_023966 [Oryza sativa (indica cultivar-group)]
[gi|2570499](#) Mass: 27003 Score: 48 Expect: 1.9 Queries matched: 4
 23kDa polypeptide of photosystem II [Oryza sativa]
[gi|50252267](#) Mass: 22283 Score: 36 Expect: 36 Queries matched: 3
 hypothetical protein [Oryza sativa (japonica cultivar-group)]

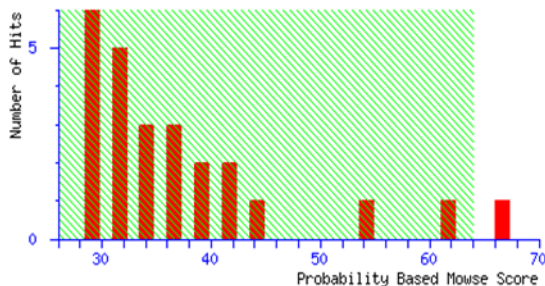


MASCOT Mascot Search Results

User : young hyun kang
 Email : rkddudgus@hanmail.net
 Search title :
 Database : NCBIInr 20071116 (5633163 sequences; 1947344958 residues)
 Taxonomy : Oryza sativa (rice) (133852 sequences)
 Timestamp : 23 Nov 2007 at 07:18:02 GMT
 Top Score : 67 for [gi|11990470](#), ribonuclease [Oryza sativa (japonica cultivar-group)]

Probability Based Mowse Score

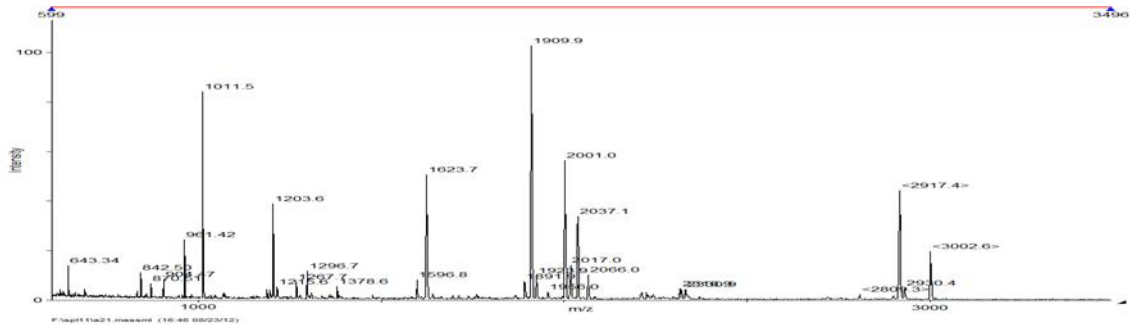
Protein score is $-10 \cdot \log(P)$, where P is the probability that the observed match is a random event. Protein scores greater than 64 are significant ($p < 0.05$).



Concise Protein Summary Report

Format As [Help](#)
 Significance threshold $p <$ Max. number of hits

- [gi|11990470](#) Mass: 23552 Score: **67** Expect: 0.029 Queries matched: 5
 ribonuclease [Oryza sativa (japonica cultivar-group)]
[gi|115476562](#) Mass: 24784 Score: **66** Expect: 0.036 Queries matched: 5
 Os08g0434100 [Oryza sativa (japonica cultivar-group)]
[gi|125561647](#) Mass: 24812 Score: **66** Expect: 0.036 Queries matched: 5
 hypothetical protein OsI_028327 [Oryza sativa (indica cultivar-group)]

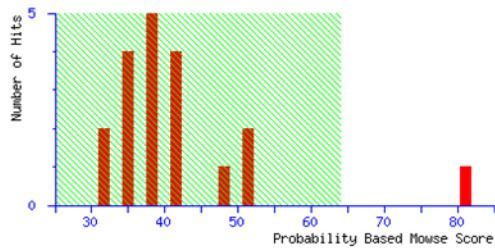


Mascot Search Results

User : young hyun kang
 Email : rkddudgus@hanmail.net
 Search title :
 Database : NCBI nr 20071116 (5633163 sequences; 1947344958 residues)
 Taxonomy : Oryza sativa (rice) (133852 sequences)
 Timestamp : 23 Nov 2007 at 07:50:21 GMT
 Top Score : 81 for [gi|125532460](#), hypothetical protein OsI_032984 [Oryza sativa (indica cultivar-group)]

Probability Based Mowse Score

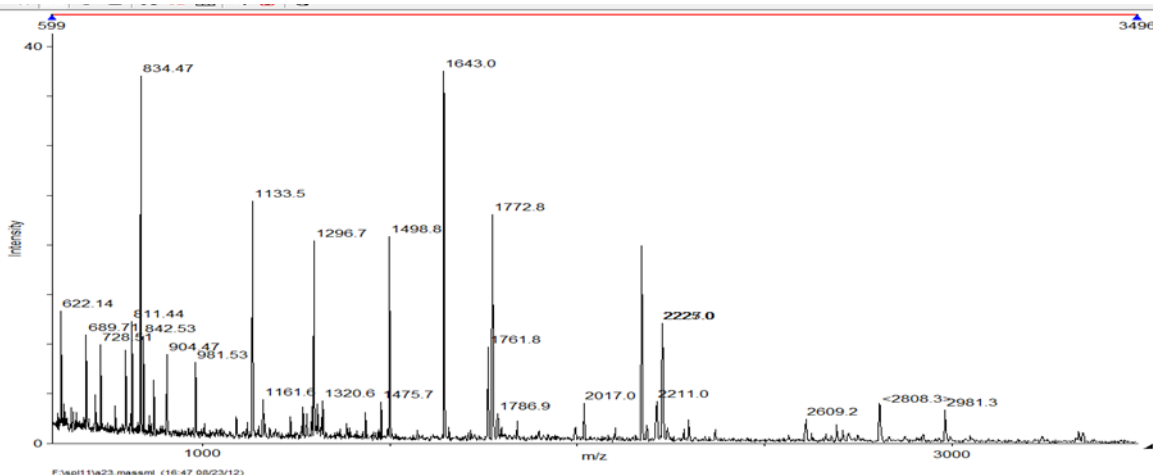
Protein score is $-10 \cdot \log(P)$, where P is the probability that the observed match is a random event.
 Protein scores greater than 64 are significant ($p < 0.05$).



Concise Protein Summary Report

Format As: [Help](#)
 Significance threshold p < 0.05 Max. number of hits: AUTO

- [gi|125532460](#) Mass: 24684 Score: 81 Expect: 0.001 Queries matched: 5
 hypothetical protein OsI_032984 [Oryza sativa (indica cultivar-group)]
[gi|115482662](#) Mass: 24477 Score: 43 Expect: 6.4 Queries matched: 3
 Os10g0490800 [Oryza sativa (japonica cultivar-group)]
[gi|125532458](#) Mass: 24491 Score: 43 Expect: 6.4 Queries matched: 3
 hypothetical protein OsI_032982 [Oryza sativa (indica cultivar-group)]
[gi|10140698](#) Mass: 25117 Score: 43 Expect: 6.9 Queries matched: 3
 putative secretory protein [Oryza sativa (japonica cultivar-group)]
[gi|115482666](#) Mass: 24651 Score: 41 Expect: 11 Queries matched: 3
 Os10g0491000 [Oryza sativa (japonica cultivar-group)]
[gi|125549366](#) Mass: 6933 Score: 37 Expect: 27 Queries matched: 2
 hypothetical protein OsI_016421 [Oryza sativa (indica cultivar-group)]

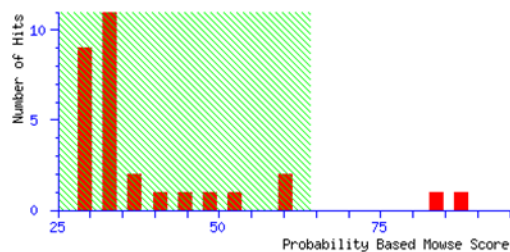


MASCOT SCIENCE Mascot Search Results

User : young hyun kang
 Email : rkddudgus@hanmail.net
 Search title :
 Database : NCBI nr 20071116 (5633163 sequences; 1947344958 residues)
 Taxonomy : Oryza sativa (rice) (133852 sequences)
 Timestamp : 23 Nov 2007 at 07:59:06 GMT
 Top Score : 87 for [gi|115459078](#), Os04g0486600 [Oryza sativa (japonica cultivar-group)]

Probability Based Mowse Score

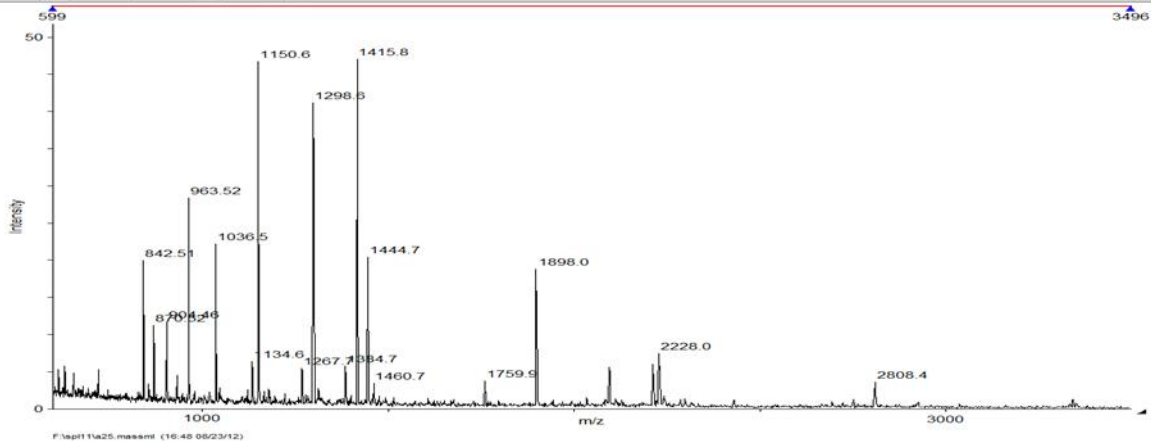
Protein score is $-10 \cdot \log(P)$, where P is the probability that the observed match is a random event. Protein scores greater than 64 are significant ($p < 0.05$).



Concise Protein Summary Report

Format As: [Help](#)
 Significance threshold p< 0.05 Max. number of hits AUTO

- [gi|115459078](#) Mass: 36750 Score: 87 Expect: 0.00024 Queries matched: 7
 Os04g0486600 [Oryza sativa (japonica cultivar-group)]
[gi|125548785](#) Mass: 42026 Score: 82 Expect: 0.00075 Queries matched: 7
 hypothetical protein OsI_015840 [Oryza sativa (indica cultivar-group)]
[gi|149390629](#) Mass: 23671 Score: 63 Expect: 0.067 Queries matched: 5
 glyceraldehyde-3-phosphate dehydrogenase [Oryza sativa (indica cultivar-group)]
[gi|149391151](#) Mass: 28297 Score: 47 Expect: 2.6 Queries matched: 4
 glyceraldehyde-3-phosphate dehydrogenase [Oryza sativa (indica cultivar-group)]

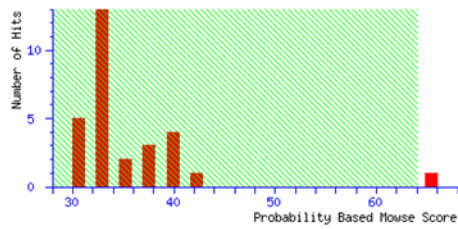


(MATRIX)
(SCIENCE) **Mascot Search Results**

User : young hyun kang
 Email : rkddudgus@hanmail.net
 Search title :
 Database : NCBI nr 20071116 (5633163 sequences; 1947344958 residues)
 Taxonomy : Oryza sativa (rice) (133852 sequences)
 Timestamp : 23 Nov 2007 at 08:08:24 GMT
 Top Score : 65 for [gi|125597180](#), hypothetical protein OsJ_020443 [Oryza sativa (japonica cultivar-group)]

Probability Based Mowse Score

Protein score is $-10 \cdot \log(P)$, where P is the probability that the observed match is a random event.
 Protein scores greater than 64 are significant ($p < 0.05$).

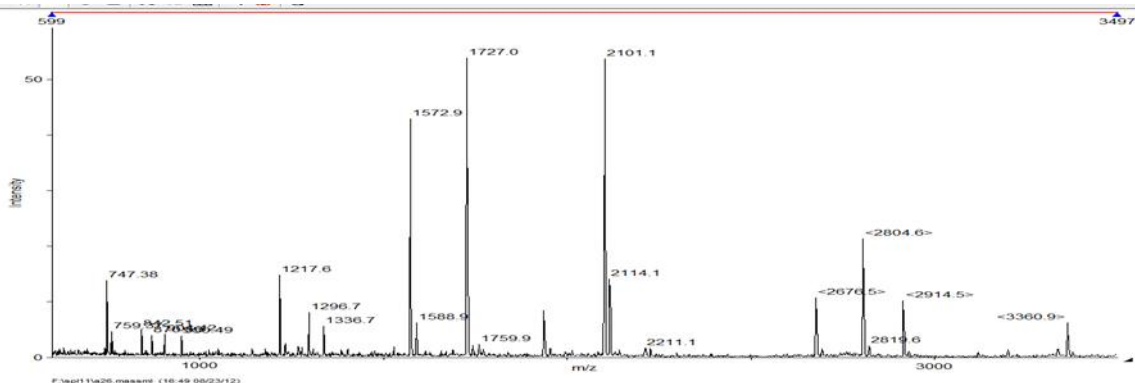


Concise Protein Summary Report

Format As [Help](#)
 Significance threshold $p < 0.05$ Max. number of hits

- [gi|125597180](#) Mass: 27414 Score: 65 Expect: 0.039 Queries matched: 5
 hypothetical protein OsJ_020443 [Oryza sativa (japonica cultivar-group)]
[gi|115468000](#) Mass: 58710 Score: 50 Expect: 1.3 Queries matched: 5
 Os06g0356800 [Oryza sativa (japonica cultivar-group)]
[gi|22296446](#) Mass: 14419 Score: 38 Expect: 22 Queries matched: 3
 hypothetical protein [Oryza sativa (japonica cultivar-group)]

Spot 26



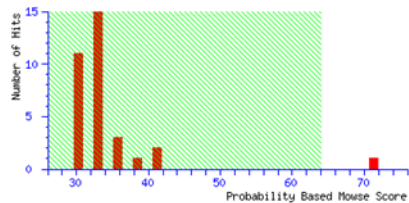
F:\sp11426.mascot (16-49 08/23/12)

Mascot Search Results

User : young hyun kang
 Email : rkddudgus@hanmail.net
 Search title :
 Database : NCBI nr 20071116 (5633163 sequences: 1947344958 residues)
 Taxonomy : Oryza sativa (rice) (133852 sequences)
 Timestamp : 23 Nov 2007 at 08:17:59 GMT
 Top Score : 71 for [gi|125601503](#), hypothetical protein OsJ_024562 [Oryza sativa (japonica cultivar-group)]

Probability Based Mowse Score

Protein score is $-10 \cdot \log(P)$, where P is the probability that the observed match is a random event. Protein scores greater than 64 are significant ($p < 0.05$).



Concise Protein Summary Report

Concise Protein Summary [Help](#)
 Significance threshold $p < 0.05$ Max. number of hits AUTO

- [gi|125601503](#) Mass: 37321 Score: 71 Expect: 0.0099 Queries matched: 6
 hypothetical protein OsJ_024562 [Oryza sativa (japonica cultivar-group)]
[gi|20286](#) Mass: 32855 Score: 55 Expect: 0.4 Queries matched: 5
 peroxidase [Oryza sativa (japonica cultivar-group)]
[gi|115474059](#) Mass: 32869 Score: 55 Expect: 0.4 Queries matched: 5
 Os07g0677200 [Oryza sativa (japonica cultivar-group)]
[gi|2429286](#) Mass: 32843 Score: 55 Expect: 0.4 Queries matched: 5
 peroxidase [Oryza sativa]
[gi|55701089](#) Mass: 33556 Score: 55 Expect: 0.43 Queries matched: 5
 TPA: class III peroxidase 111 precursor [Oryza sativa (japonica cultivar-group)]
[gi|125559597](#) Mass: 33588 Score: 55 Expect: 0.44 Queries matched: 5
 hypothetical protein OsI_026365 [Oryza sativa (indica cultivar-group)]