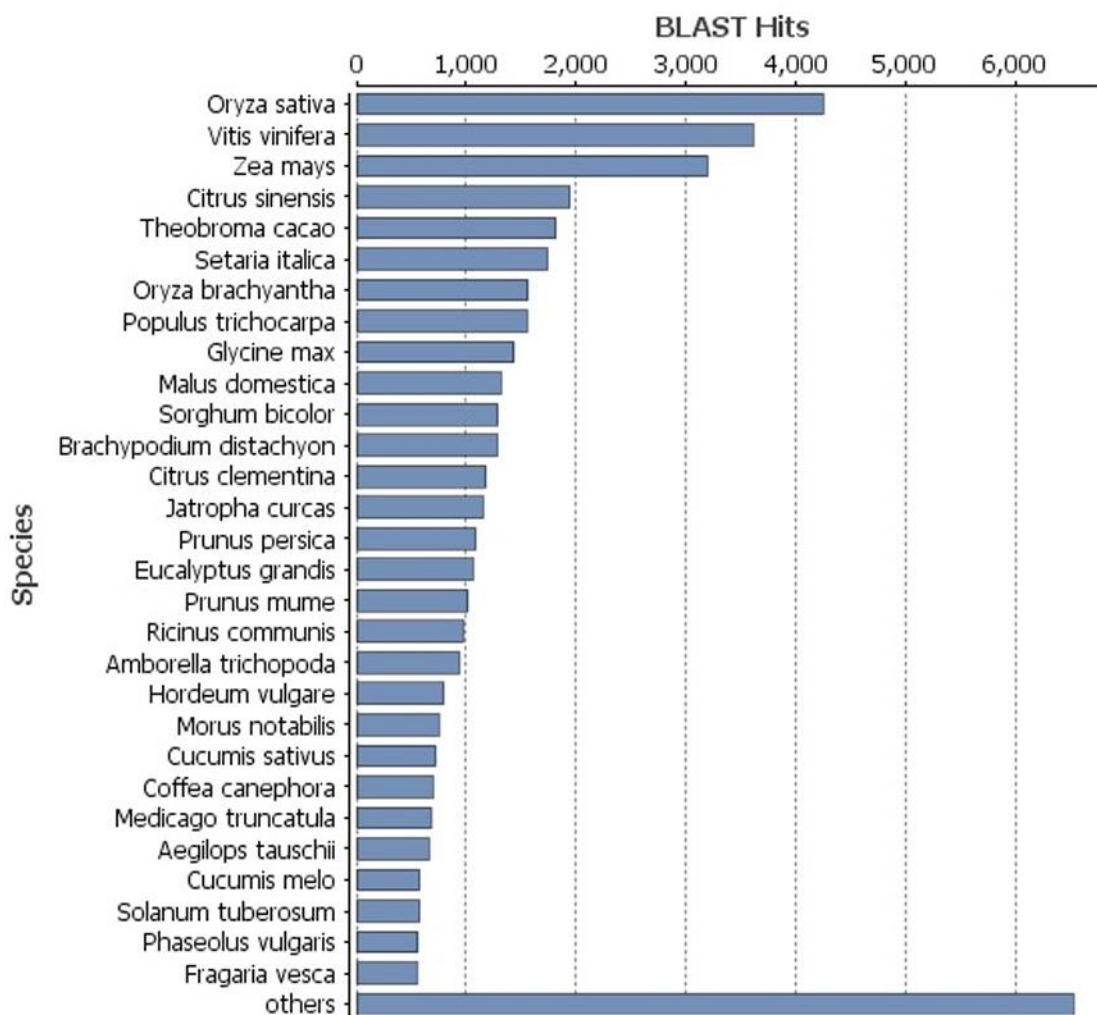


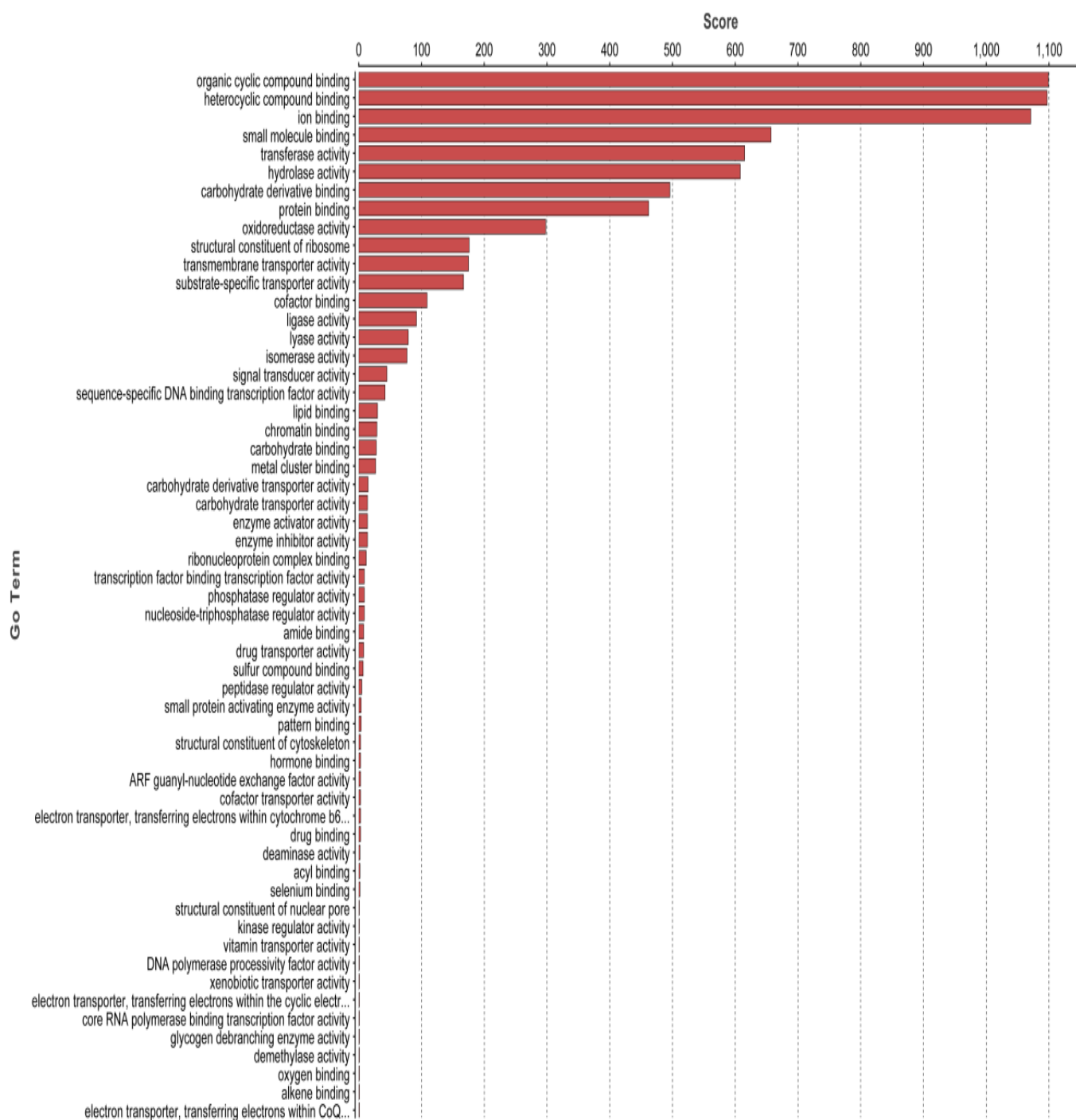
Analysis of ESTs from the date palm (*Phoenix dactylifera* L.) cv. Sukary, an elite variety

Sulieman A. Alfaifi, Muhammad A. Khan, Hussein M. Migdadi, Jernej Jakse, Megahed H. Ammar, Ehab H. El-Harty, Mohammad I. Althamrah, Muhammad Afzal, Muhammad M. Javed and Salem S. Alghamdi

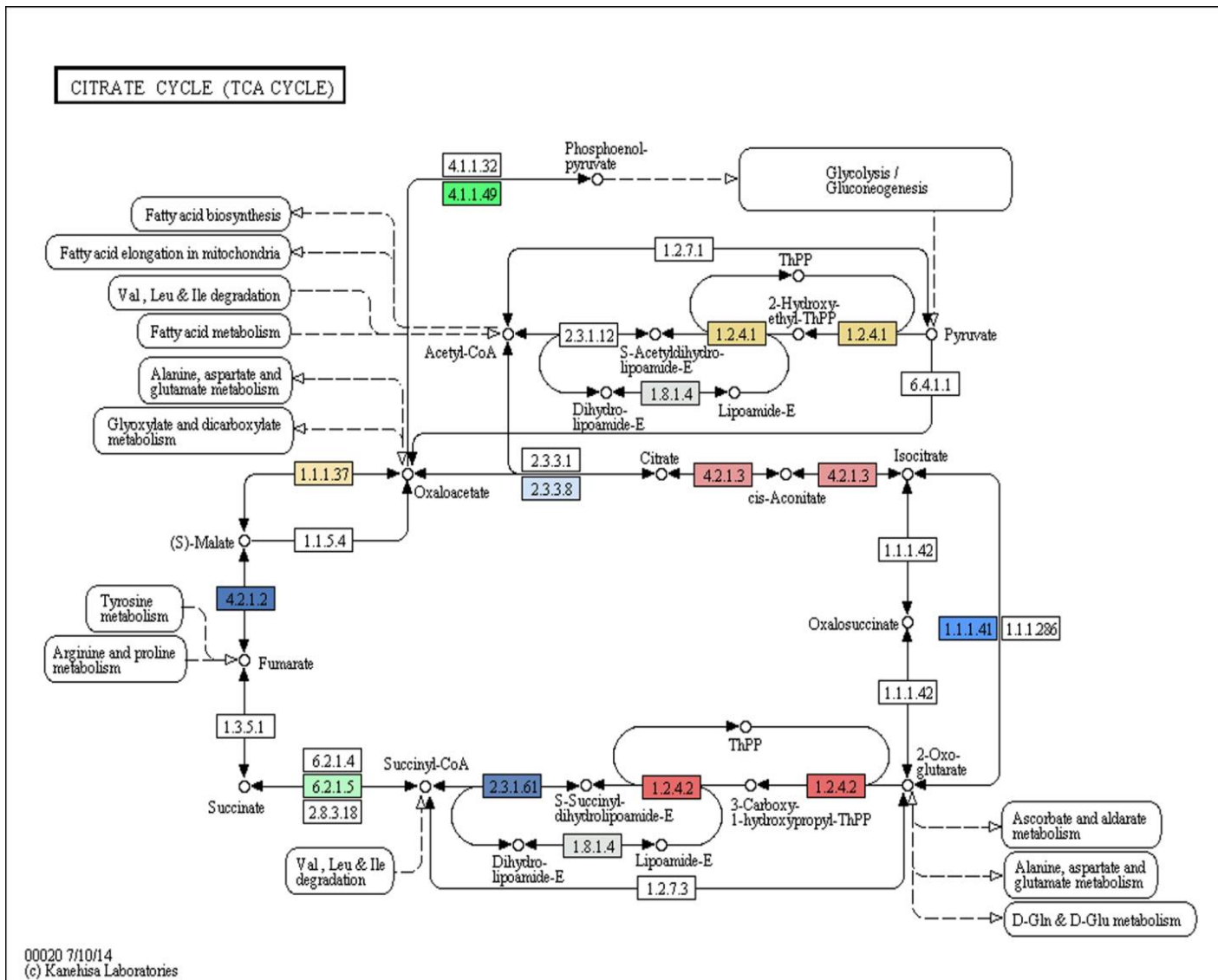


Supplementary Fig 1. Species distribution chart of EST of date palm after blastx to NCBI nr. Briefly explain Fig. BlastX-based “top-hit” species are ranked by their matched entries. The highest “hit-species” is the rice (*Oryza sativa*), followed by grapes (*Vitis vinifera*) and corn (*Zea mays*).

molecular_function Level 3



Supplementary Fig 2. The most enriched terms at the third GO level (Molecular function level).



Supplementary Fig 3. A representative KEGG map for the citric cycle.