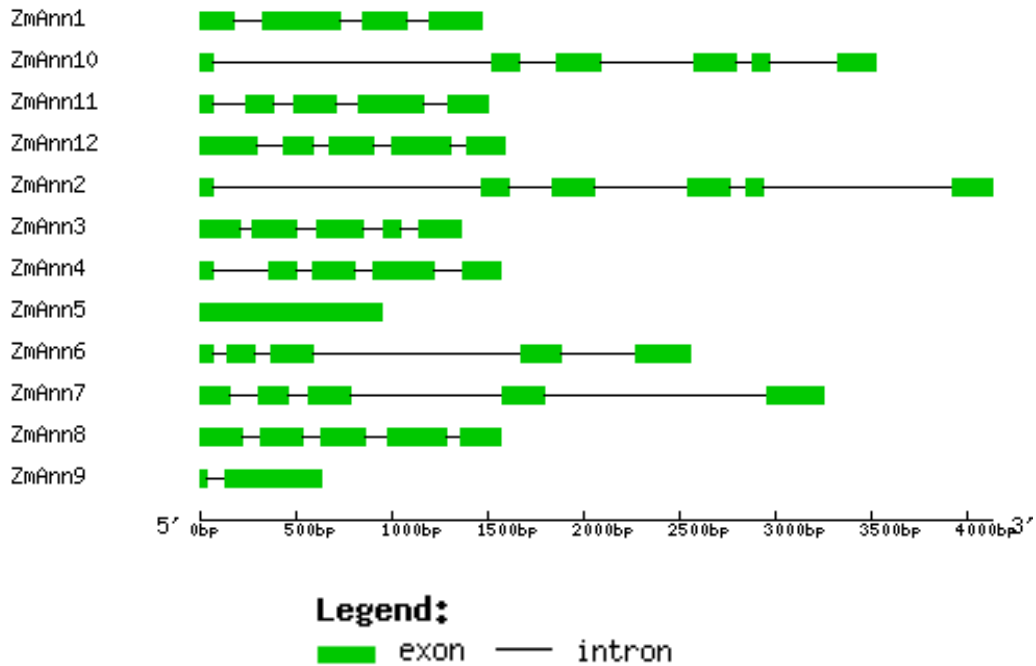


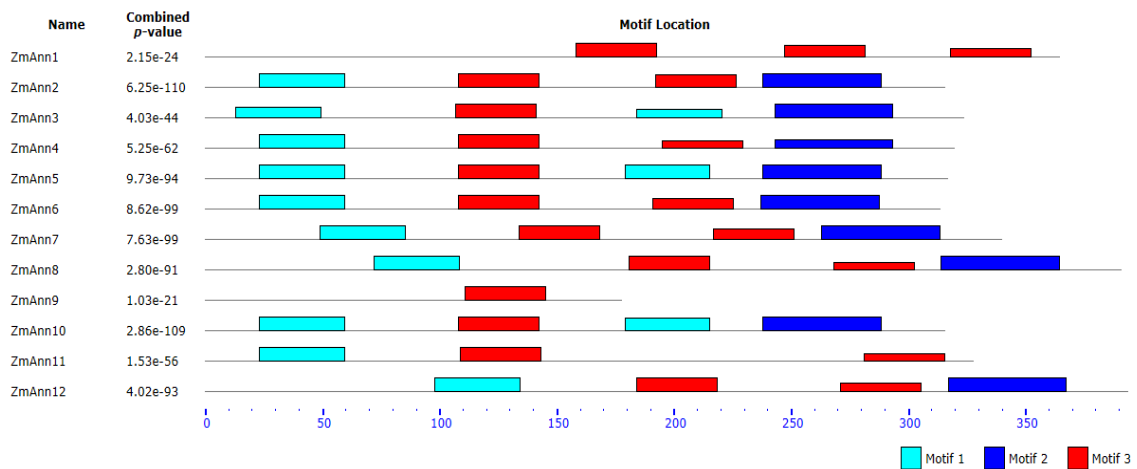
Supplementary data

Genome-wide analysis and functional identification of the annexin gene family in maize (*Zea mays* L.)

Zhongbao Zhang, Xianglong Li, Meng Han, Zhongyi Wu*



Supplementary Fig 1. Gene structure of maize *annexin* gene family. Exons and introns were showed by filled boxes and single lines, respectively.



Supplementary Fig 2. Putative motif distribution in maize *annexin* proteins.

Supplementary Table 1. Primers of *ZmAnn* genes for Real-Time PCR

Gene	Forward primer (5'-3')	Reverse primer (5'-3')	T _m (°C)
<i>ZmAnn1</i>	CGACGAGCACCAAGACCTCACCA	CCGGCGCTCGACGAGAAGAAGC	60
<i>ZmAnn2</i>	GCTATGAAGGTCCCGAGGTTG	GCAGAAGAAACAGATGCCAAG	60
<i>ZmAnn3</i>	ACCGAGCCGTCTCACCCCTTAC	GACGGAACCAGAACCAGCACC	60
<i>ZmAnn4</i>	GTGATAGGCATCCTAGCCCACCG	TTCGCCATCACCCGCTGCCTCT	60
<i>ZmAnn5</i>	CACGGGCGACATCACCAACCT	GCTCGACGTAGCAGCCGAACC	60
<i>ZmAnn6</i>	CACCTGCCCTGACAGATACTTCG	AGCCTCCTTTATCAGCTTCAGGTC	60
<i>ZmAnn7</i>	AGGCTTATCACGAGCGGTTCA	GACCTCTGGTCCATCATAGCG	60
<i>ZmAnn8</i>	ACCACGTTCCAAGGCGTTGATT	CCCTGCTTCTTCATGGCCTTG TG	60
<i>ZmAnn9</i>	CAGCAACTCACCAGGGCCTTCTCA	CGCCGCCGTGGCTGCTGAAGAA	60
<i>ZmAnn10</i>	CTACGAAGGTCTGAGGTTGAT	GGTAGGCAGACGAAACAGATGC	60
<i>ZmAnn11</i>	CGTGTCGTC AAGCAAGCCTACC	GTTGTCGTCGCCGTCGTACCTG	60
<i>ZmAnn12</i>	GGAGGCTTCTGCACCTTTATCCA	CCATCCTTGCACTGCTGCTTTCC	60
<i>ZmGAPDH</i>	CCCTTCATCACCAACGGACTAC	AACCTTCTTGGCACCACCCT	60